

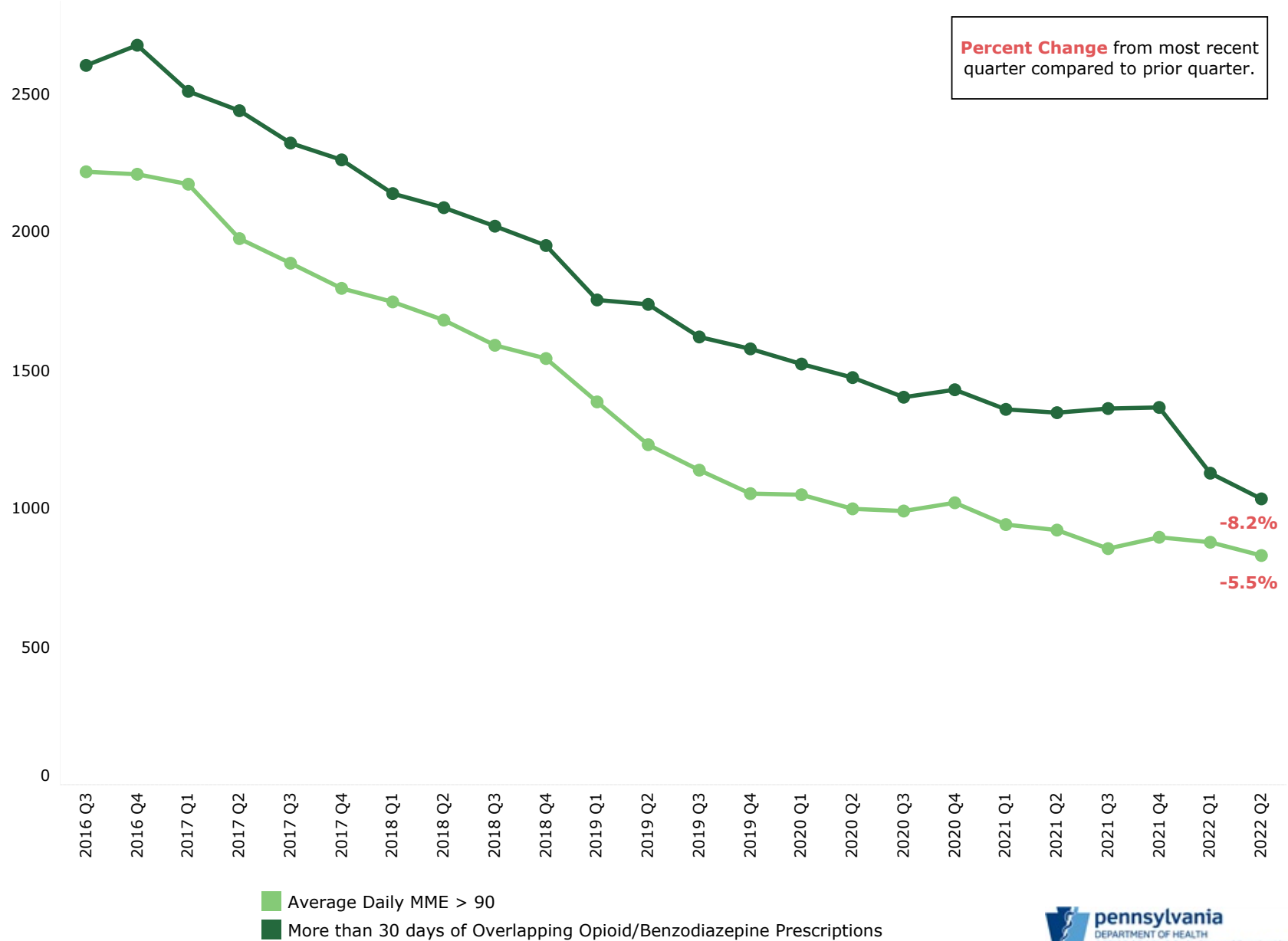


Chester County Quarterly Prescription Drug Monitoring Program Data Report

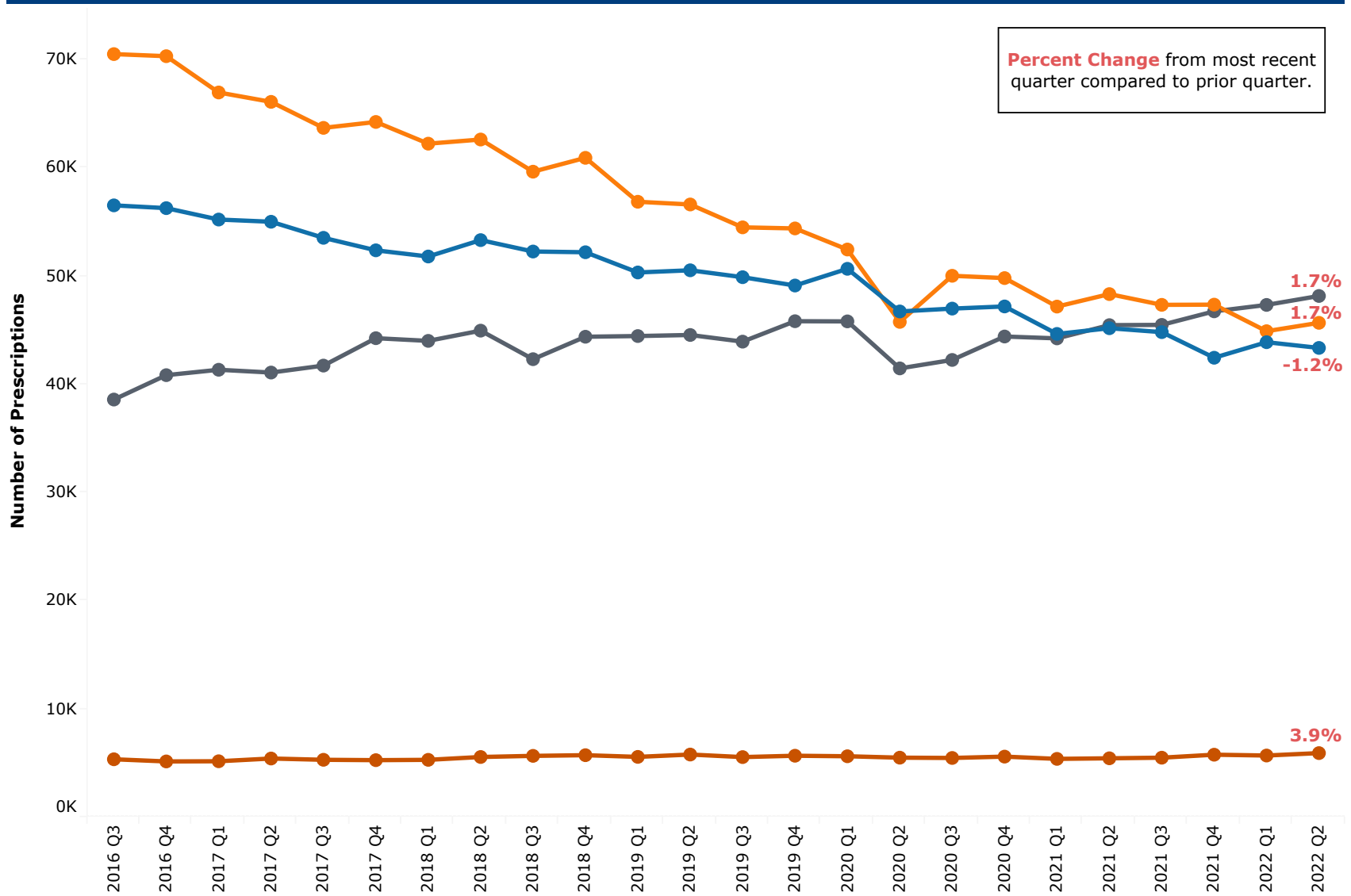
Office of Drug Surveillance and Misuse Prevention

October 2022

Number of Chester County Residents Meeting Risky Prescribing Metric Criteria



Total Number of Prescriptions by Drug Class for Chester County Residents

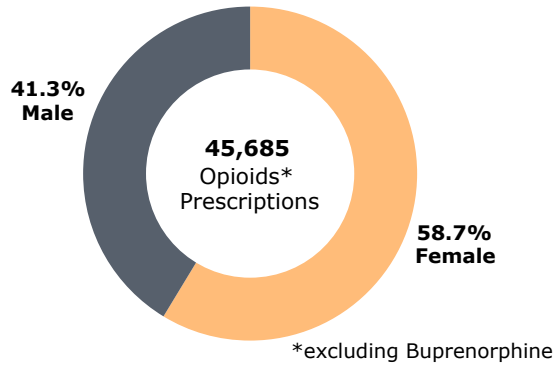


■ Benzodiazepines ■ Opioids*
■ Buprenorphine ■ Stimulants

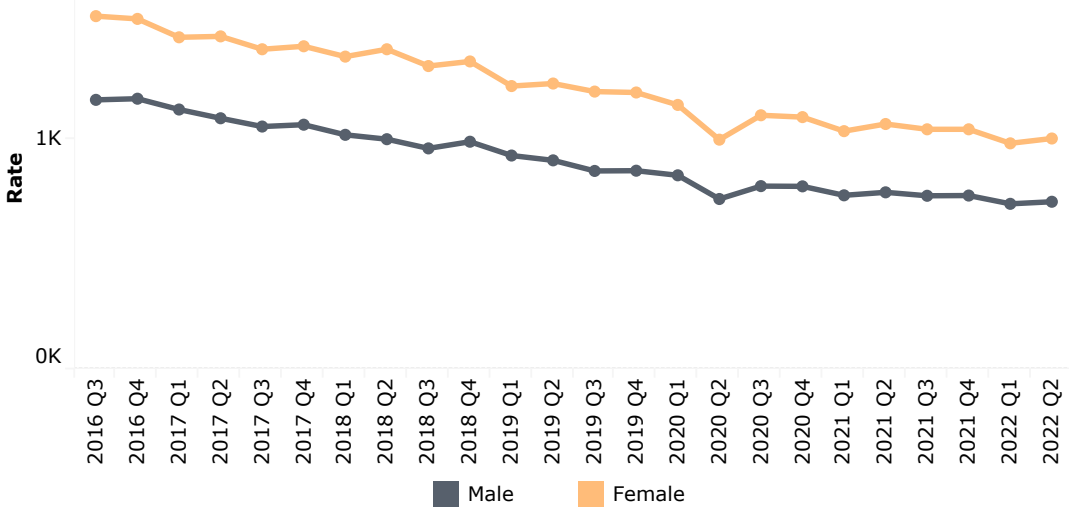
*excluding Buprenorphine

Demographics of Patients with Opioids* Prescriptions in Chester County

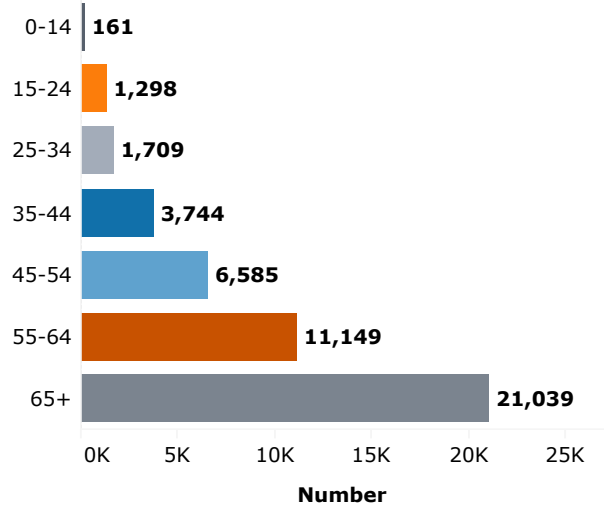
Rx Percentage | Sex: Quarter 2, 2022



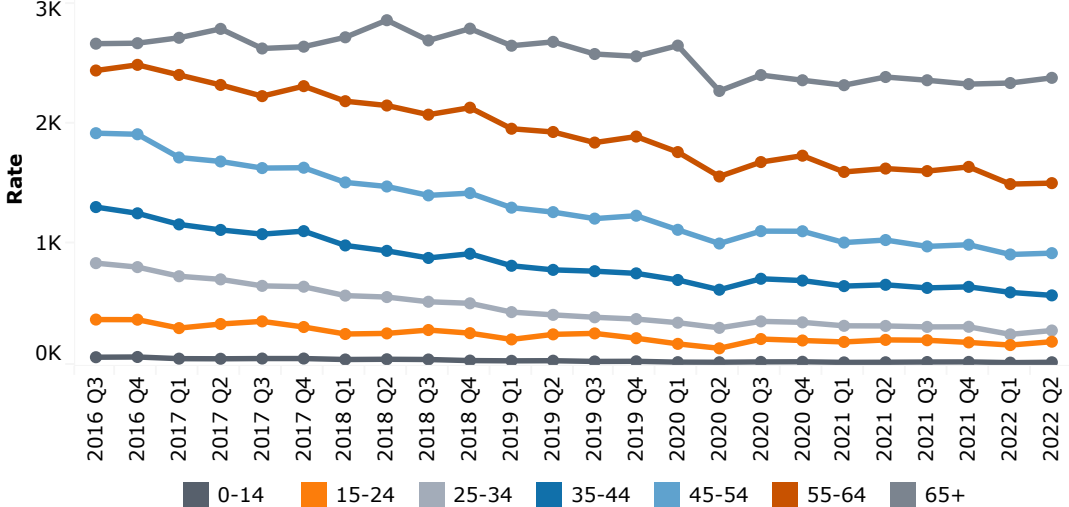
Rate per 10,000 Population | Sex



Number of Rx | Quarter 2, 2022



Rate per 10,000 Population | Age





For additional information, please visit the Interactive Data Report at:
<https://www.health.pa.gov/topics/programs/PDMP/Pages/Data.aspx>

For questions regarding this report, please contact:

Carrie Thomas Goetz, PhD

Senior Epidemiologist
Office of Drug Surveillance and Misuse Prevention
Pennsylvania Department of Health
cthomasgoe@pa.gov
717.547.3137

Erin Takemoto, PhD, MPH

Epidemiologist
Office of Drug Surveillance and Misuse Prevention
Pennsylvania Department of Health
etakemoto@pa.gov
717.317.5967