

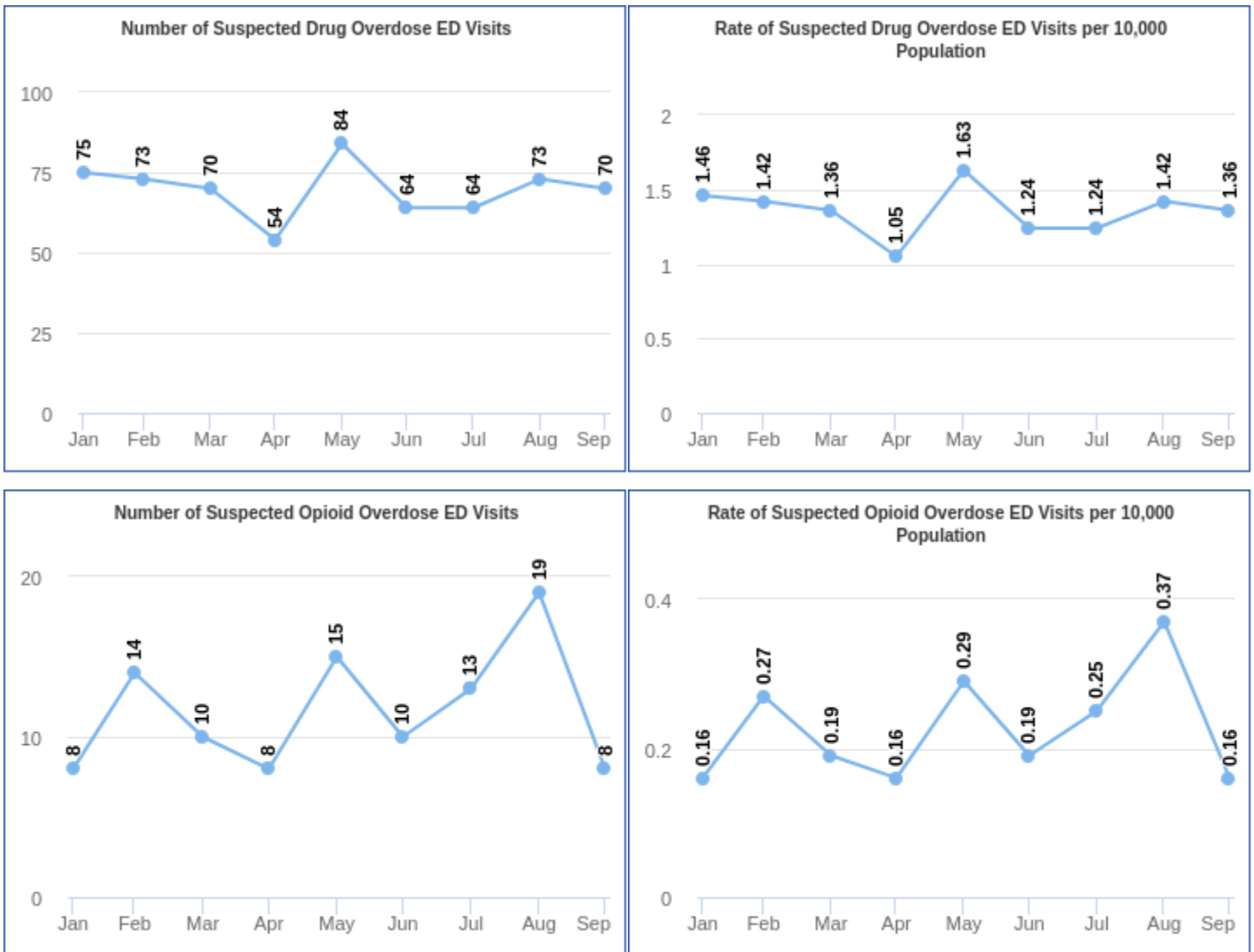
Quarterly Report on Overdose-Related Emergency Department Visits for Chester County Residents



Chester County

Suspected Drug Overdose in Chester County, Year-to-Date

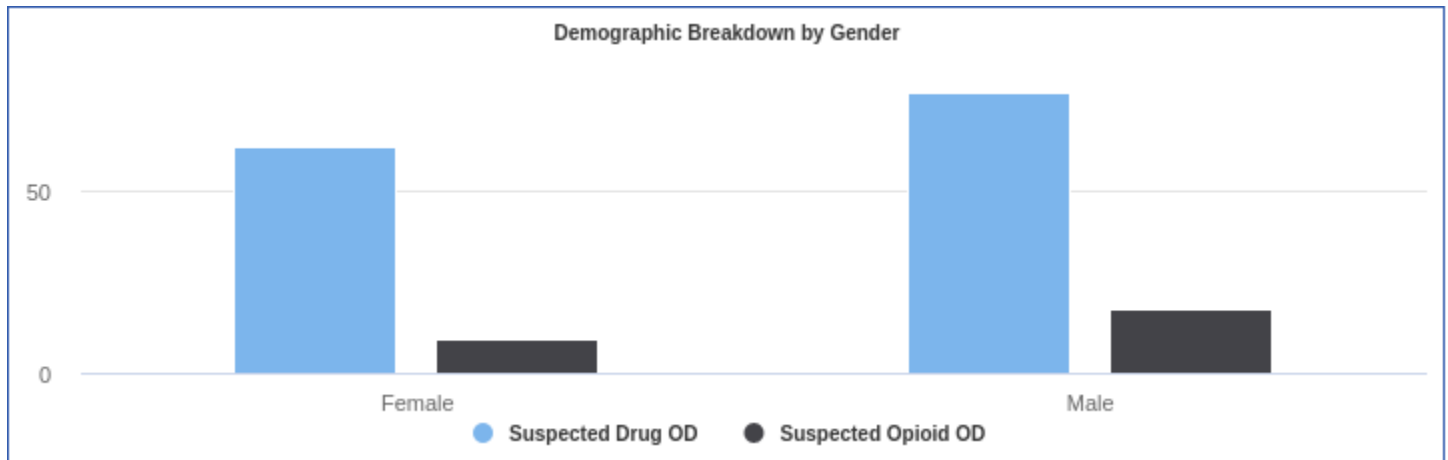
All charts show ED Visits in Chester County by Month, January 1, 2022 - September 30, 2022.



Chester County, through time periods January 1, 2022 - September 30, 2022. All data is based on patient's home location. In keeping with confidentiality regulations, numbers and rates are not disclosed for between one and four events. Where there are 20 or fewer All Cause Emergency Department Visits, rates are not calculated due to the instability of rates. These data are preliminary, and data quality and completeness may vary over time.

Demographic Breakdown Graphs in Chester County

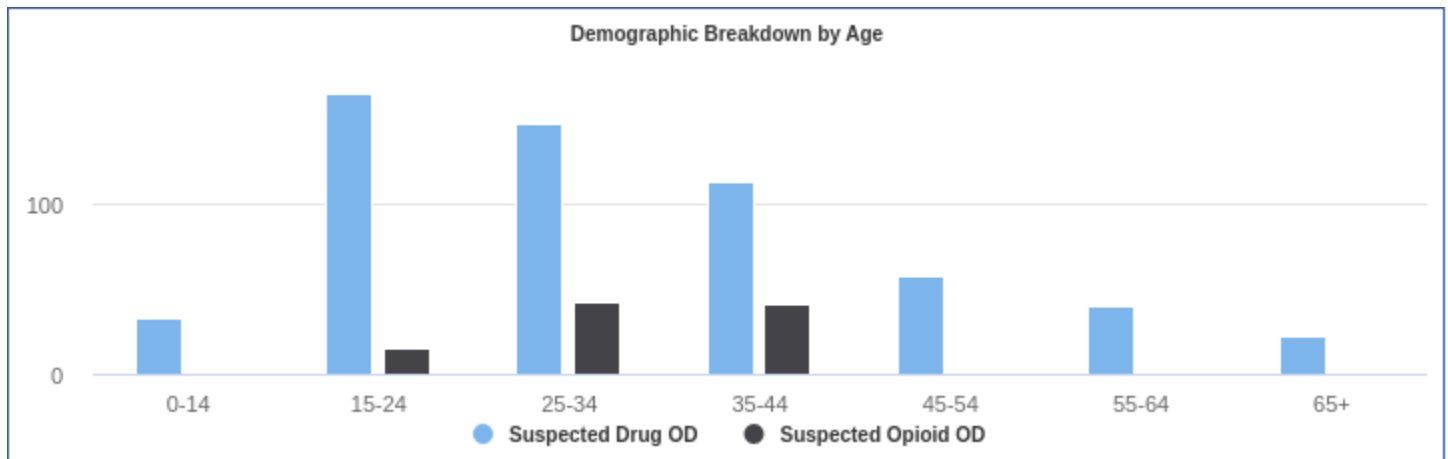
All charts show Rates of Suspected Drug and Opioid Overdose (OD) Emergency Department Visits in Chester County per 10,000 Visits, July 1, 2022 - September 30, 2022.



GENDER	SUSPECTED DRUG OD RATE (COUNT)	SUSPECTED OPIOID OD RATE (COUNT)
Female	62.5 (99)	9.5 (15)
Male	77.2 (108)	17.9 (25)

All data is based on patient's home location. In keeping with confidentiality regulations, numbers and rates are not disclosed for between one and four events ("a") and marked as "aa" when 5 or greater but suppressed to preserve censoring of an adjacent cell. Where there are 20 or fewer All Cause Emergency Department Visits, rates are not calculated due to the instability of rates ("b"). These data are preliminary, and data quality and completeness may vary over time.

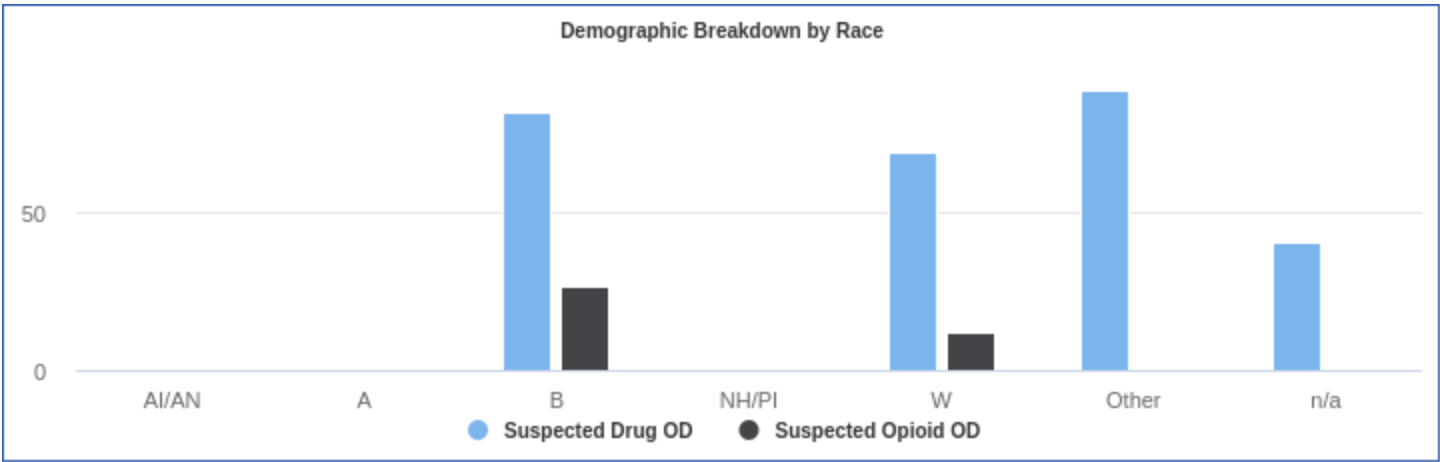
**Where noted, less than 80% of records had valid data points available. Caution should be used when interpreting these results.



AGE	SUSPECTED DRUG OD RATE (COUNT)	SUSPECTED OPIOID OD RATE (COUNT)
0-14	32.8 (10)	.0 (0)
15-24	165.2 (55)	15.0 (5)
25-34	147.2 (49)	42.1 (14)
35-44	112.9 (36)	40.8 (13)
45-54	57.9 (19)	a
55-64	40.2 (16)	a
65+	22.8 (22)	a

All data is based on patient's home location. In keeping with confidentiality regulations, numbers and rates are not disclosed for between one and four events ("a") and marked as "aa" when 5 or greater but suppressed to preserve censoring of an adjacent cell. Where there are 20 or fewer All Cause Emergency Department Visits, rates are not calculated due to the instability of rates ("b"). These data are preliminary, and data quality and completeness may vary over time.

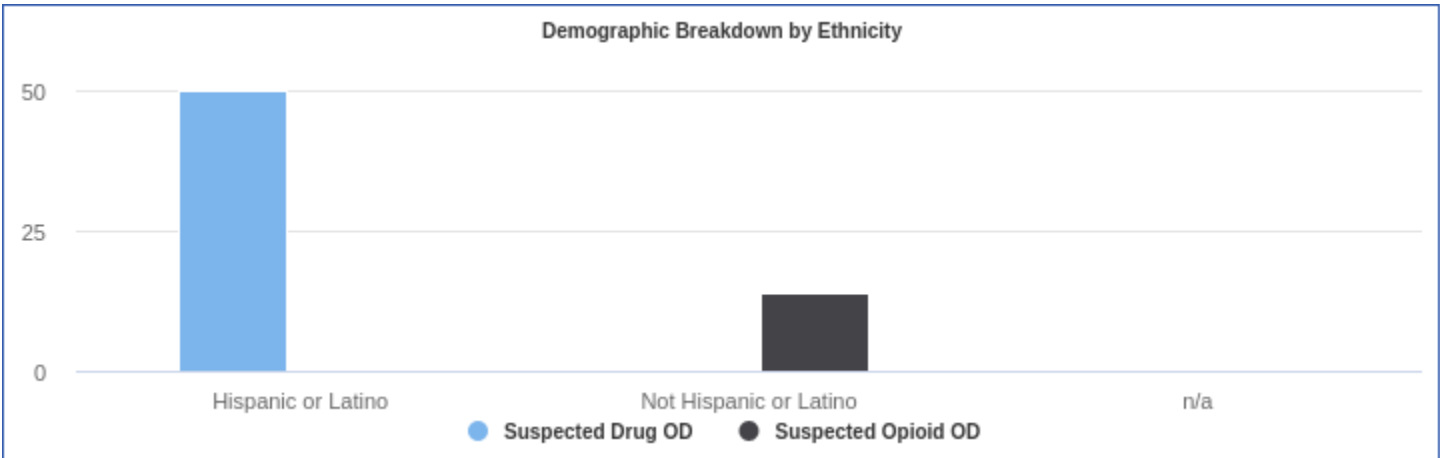
**Where noted, less than 80% of records had valid data points available. Caution should be used when interpreting these results.



RACE	SUSPECTED DRUG OD RATE (COUNT)	SUSPECTED OPIOID OD RATE (COUNT)
American Indian or Alaska Native (AI/AN)	aa	.0 (0)
Asian (A)	a	.0 (0)
Black or African American (B)	81.7 (28)	26.3 (9)
Native Hawaiian or Other Pacific Islander (NH/PI)	.0 (0)	.0 (0)
White (W)	69.1 (153)	12.2 (27)
Other	88.6 (15)	a
n/a	40.3 (7)	a

All data is based on patient's home location. In keeping with confidentiality regulations, numbers and rates are not disclosed for between one and four events ("a") and marked as "aa" when 5 or greater but suppressed to preserve censoring of an adjacent cell. Where there are 20 or fewer All Cause Emergency Department Visits, rates are not calculated due to the instability of rates ("b"). These data are preliminary, and data quality and completeness may vary over time.

**Where noted, less than 80% of records had valid data points available. Caution should be used when interpreting these results.



ETHNICITY	SUSPECTED DRUG OD RATE (COUNT)	SUSPECTED OPIOID OD RATE (COUNT)
Hispanic or Latino	50.0 (11)	a
Not Hispanic or Latino	aa	13.9 (37)
n/a	a	a

All data is based on patient's home location. In keeping with confidentiality regulations, numbers and rates are not disclosed for between one and four events ("a") and marked as "aa" when 5 or greater but suppressed to preserve censoring of an adjacent cell. Where there are 20 or fewer All Cause Emergency Department Visits, rates are not calculated due to the instability of rates ("b"). These data are preliminary, and data quality and completeness may vary over time.

**Where noted, less than 80% of records had valid data points available. Caution should be used when interpreting these results.